

**XEROX®**

Technology | Document Management | Consulting Services



color printer

# Affordable power for the busiest office



Phaser® 8560  
Phaser® 8560MFP



*Solid ink is earth-friendly.  
It generates 1/40th the waste  
of a typical color laser device.*

# A colorful choice...

Xerox offers a choice of value-packed office devices that deliver the utmost in productivity: The **Phaser 8560** printer gives busy workgroups a fast, affordable, easy-to-use color printer that can expand from a desktop model to a four-tray, floor-standing powerhouse; the **Phaser 8560MFP** multifunction printer adds top-of-the-line copying, scanning and faxing for all your office document needs.

## Outstanding color

**The Phaser 8560 printer and the Phaser 8560MFP multifunction printer give you precise details and rich, vibrant colors.**

- Count on superior output on everything from cover stock to recycled paper. Confidently handle color projects in-house and reduce costs and increase efficiency.

- True Adobe® PostScript® 3™ and automatic color-enhancement tools ensure that color-intensive documents print reliably and accurately.
- Produce fast, versatile prints for everyday jobs. When you really want to impress, switch to 2400 FinePoint™ print resolution mode.
- Nothing else on the market offers more consistent, vivid color. The last page of a large print job looks as good as the first.



*Go ahead, get creative.  
Print on business card  
stock, postcards, labels,  
transparencies and more.  
You can expect the same  
brilliant output no matter  
what the media.*

# print

## Phaser 8560



### A color printer that meets the challenge

**The Phaser 8560 printer delivers fast, attention-grabbing results.**

- Pick up the pace with a first-page-out print time as fast as 5 seconds. Both black-and-white and color print at up to 30 ppm.
- A 600 MHz processor and 256 MB of memory (upgradeable to 1 GB) provide the muscle you need for the most intense projects.
- Put off reloading paper, or swapping one size for another, with a combined paper-tray capacity of 625 sheets — a huge stack of paper for a device that sits on a desktop. Add third and fourth trays to increase capacity to 1,675 sheets.
- Handy productivity printing tools are standard, not expensive add-ons: job accounting, custom-size pages, image smoothing and many more.
- Automatic two-sided printing saves time and reduces paper costs.

# print copy scan fax

## Phaser 8560MFP

### Multiple functions, no waiting

**The Phaser 8560MFP will tackle your workload with an array of time-saving tools:**

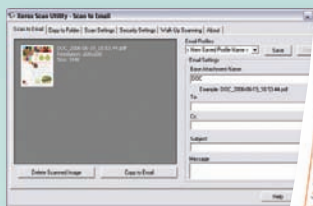
- Access walk-up copying, scanning, or faxing functions when you need them, even while other jobs are printing. Spend your valuable time working, not waiting for your turn.
- See the first page of your copy job in as little as 15 seconds and the first page of your print job in as little as 6 seconds. Print black-and-white and color at up to 30 ppm.
- Gather all those loose paper documents and scan them straight to your desktop, or to a public or private folder. Organize, edit, and distribute files with powerful onboard scanning tools.
- LAN Fax lets you send faxes directly from your PC.
- An array of productivity tools for all functions is standard.



### Superior design and ease of use

*Large paper trays let you print more without interruption.*

- 1 100-sheet Tray 1 for a wide range of custom media and sizes
- 2 Generous 525-sheet Tray 2
- 3 Add one or two 525-sheet trays
- 4 for a total capacity of 1,675 sheets



## An ace up your sleeve: Scanning tools

Use the power of scanning and your Phaser 8560MFP to efficiently organize, edit and distribute information.

- Scan documents straight to your desktop. Edit them now or store them for access later.
- Scan documents to a public folder. This gets them off your desktop and makes them accessible to anyone.
- Scan documents to password-protected private folders. This allows central storage but restricted access.

## Scan to PC Desktop® software

Plus, we include a valuable scanning software bundle with the 8560MFP/X configuration:

**Convert:** Quickly convert paper and PDF documents into editable and searchable digital documents — supporting Microsoft® Office applications — with accurate page layout and format.

**Organize and share:** Quickly and easily scan, annotate, or archive documents in PDF file format. The PDF files can be viewed, accessed and arranged via large, clear thumbnails on the desktop and shared with a simple drag-and-drop.

## No-fuss productivity

A simple, cartridge-free design and a host of helpful features make these devices easy to set up, operate and share.



- Streamlined, automated driver installation gets your device up and running in minutes.
- Replenishing ink is as easy as reloading a stapler. There's no mess to clean up and no bulky boxes to store.
- PrintingScout™ technology monitors your print projects. If a potential issue arises, a handy pop-up alert suggests a remedy.
- Manage, configure and monitor print jobs directly from your computer thanks to the CentreWare® IS Embedded Web Server.
- Built-in security tools (standard on 8560DX and all 8560MFP configurations) keep your data safe. Secure Print holds hard-copy output until a PIN is entered, and Hard Drive Overwrite “shreds” data after every job or on request.



*A monthly duty cycle of 85,000 pages (170 reams of paper!) guarantees long-lasting reliability and quality for your busy workgroup.*

## Phaser® 8560 / 8560MFP



### What do both products have in common?

Easier to use than color lasers or inkjets, solid ink delivers high performance, a very low cost of ownership and outstanding print quality.

# Colorful, versatile and easy to use

PRINT

## Phaser® 8560

### High-performance printing

- Superfast 30 ppm printing for both color and black-and-white
- Outstanding print quality and flexible media handling
- Feature packed and cost effective

COLOR

**The impact of color**  
Color attracts, clarifies and sells. It is one of the most effective business tools available.

EASE OF USE

**Easy to install, use and manage**  
Boost productivity with devices that make office life easier.

## Phaser® 8560MFP

### Sophisticated functionality

- Print, copy, scan and fax together in one device
- Multitasking performance
- Advanced fax capabilities

PRINT

COPY

SCAN

FAX



Call today. For more information, call 1-877-362-6567 or visit us at [www.xerox.com/office](http://www.xerox.com/office)



	8560N	8560DN	8560DT	8560DX	8560MFP/N	8560MFP/D	8560MFP/T	8560MFP/X
<b>Speed</b>	Up to 30 ppm color / 30 ppm black-and-white							
<b>Duty Cycle</b>	85,000 images / month							
<b>Paper Handling</b>	<b>Tray 1:</b> 100 sheets; Custom sizes: 3.5 x 5 in. to 8.5 x 14 in. / 76 x 127 mm to 216 x 356 mm <b>Tray 2:</b> 525 sheets; Selectable sizes: 5.5 x 8.5 in. to 8.5 x 14 in. / 140 x 216 mm to 216 x 356 mm							
Document handler	NA			Document Glass		Duplex Automatic Document Feeder: 50 sheets		
<b>Tray 3:</b> 525 sheets	Optional		Standard		Optional		Standard	
<b>Tray 4:</b> 525 sheets	Optional		Standard		Optional		Standard	
Paper output	250 sheets							
Two-sided output	Optional	Standard			Optional	Standard		
<b>Copy</b>								
First-page-out time	NA			As fast as 15 seconds color / 15 seconds black-and-white				
Resolution (max)	NA			600 x 600 dpi				
Copy features	NA			Book copying, Booklet creation, Collation, Covers, Image Center, Image shift, N-up, Reduce / Enlarge, Repeat image, Color Password Protection				
<b>Print</b>								
First-page-out time	As fast as 5 seconds color			As fast as 6 seconds color				
Resolution (max)	Up to 2400 FinePoint™							
Memory (std / max)	256 MB / 1 GB			512 MB / 1 GB				1 GB / 1 GB
Processor / PDL	600 MHz processor / True Adobe® PostScript® 3™, PCL® 5c emulation							
Connectivity	10/100Base-TX Ethernet, USB 2.0, IPv6***							
Print features	Custom-size pages, Xerox Installer, Intelligent Ready, Booklet printing**, Smart Trays, Remote Printing, Job Accounting, Printer Neighborhood, Run Black							
Productivity kit	Optional			Hard drive: Personal/Personal Saved/Secure/Proof/Saved Print, Print With, Extended font/form storage, Collation, Hard Drive Overwrite				
<b>Scan</b>								
Scan destinations	NA			Scan to PC / Mac, Scan to TWAIN application, Scan to email, Scan to desktop, Scan to Public / Private Folders				
Scan to PC Desktop®	NA			Optional		Standard		
<b>Fax</b>								
Fax features	NA			33.6 kbps Super Group 3, 200 individual / 100 group Speed dials, fax to multiple addresses, Fax security				
<b>Warranty</b>	One-year on-site warranty, Xerox Total Satisfaction Guarantee							

**Device Management**

Xerox® CentreWare® Printer Management for Microsoft, Novell and UNIX, Xerox CentreWare® IS Embedded Web Server, CentreWare Web, Xerox NDPS Gateway, Usage Analysis Tool, Configuration card, PrintingScout™, MailInX email alerts, PhaserSMART®

**Print Drivers**

Windows® 2000/XP/2003 Server, Vista, Mac OS® 9.x/X version 10.2 and higher, Novell NetWare® 5.x/6.5 (NDPS only), UNIX/Linux (see web), Xerox Walk-Up® Printer Drivers

**Security**

802.1x protocol\* (EAP-MD5, EAP-TLS, EAP-PEAP0-MSCHAPv2)

**Media Handling**

Tray 1: 16 – 40 lb. bond, 50 – 80 lb. cover / 60 – 220 gsm; 3.5 x 5 in. to 8.5 x 14 in. / 89 x 127 mm to 216 x 356 mm  
 Trays 2 – 4: 16 – 32 lb. bond, 22 – 45 lb. cover / 60 – 120 gsm; 5.5 x 8.5 in. to 8.5 x 14 in. / 140 x 216 mm to 216 x 356 mm  
 Duplex Automatic Document Feeder: 16 – 32 lb. bond, 22 – 45 lb. cover / 60 – 120 gsm

Media types: transparencies, envelopes, labels, glossy paper, custom-size paper

**Operating Environment**

Temperature: Nonoperating: -22° to 140° F / -30° to 60° C; Operating: 50° to 90° F / 10° to 32° C  
 Relative Humidity: Nonoperating: 10% to 95%; Operating: 10% to 80%

Sound power levels: Operating: 54 dBA, Standby: 33 dBA

**Electrical**

Power: 110 – 240 V, 50 – 60 Hz  
 Power consumption: Average: 230 W / Max: 1500 W; ENERGY STAR® qualified (S configuration)

**Dimensions (WxDxH)**

Phaser 8560: 16 x 21 x 14.5 in. / 406 x 533.4 x 368 mm; Weight: 60 lb. / 28 kg. Additional feeder: 5.3 in. / 135 mm; Weight: 16 lb. / 7.3 kg.  
 Phaser 8560MFP: 20.9 x 26.2 x 24.4 in. / 532 x 665 x 620 mm; Weight: 93 lb. / 43 kg. Additional feeder: 5.3 in. / 135 mm; Weight: 16 lb. / 7.3 kg. Optional cart: 19.7 x 27 x 14.2 in. / 500 x 670 x 360 mm

**Certifications**

Certified to UL 60950-1/CSA 60950-1-03 1st Edition, FCC Part 15 Class A, Low Voltage Directive 73/23/EEC, EN 60950-1 EMC Directive 89/336/EE3, GOST EN55022 Class A, EN 55024, ROHS Directive 2002/95/EC

**Options**

- 8560MFP/N to D upgrade 097S03666
- 8560N to DN upgrade 097S03822
- Productivity kit (8560) 097S03812
- 256 MB Memory 097S03381
- 512 MB Memory 097S03382
- 525-sheet feeder (8560) 097S03667
- 525-sheet feeder (8560MFP) 097S03319
- System Cart 097S03318
- Scan to PC Desktop
- Professional (std on 8560MFP/X) 097S03735
- SE 097S03739
- Wireless network adapter
- N. American power converter 097S03740
- Euro power converter 097S03741
- UK power converter 097S03742



\* Available for 8560MFP in Q3 2008 \*\* Requires 2-sided printing \*\*\* Requires system firmware version 1.3.7.P (Available for 8560MFP in Q3 2008)  
 Copyright © 2008 XEROX CORPORATION. All rights reserved. Contents of this publication may not be reproduced in any form without permission of XEROX CORPORATION. XEROX®, Phaser®, PhaserSMART®, CentreWare®, PrintingScout™ and Walk-Up® are trademarks of XEROX CORPORATION in the U.S. and/or other countries. Total Satisfaction Services is a service mark of XEROX CORPORATION. All other trademarks are the property of their respective manufacturers. PANTONE Colors generated may not match PANTONE-identified standards. Consult current PANTONE publications for accurate color. PANTONE, and other Pantone, Inc. trademarks are the property of Pantone, Inc. PCL® is a registered trademark of Hewlett-Packard. As an ENERGY STAR partner, Xerox Corporation has determined that this product meets the ENERGY STAR guidelines for energy efficiency. ENERGY STAR and the ENERGY STAR mark are registered U.S. marks. The information in this brochure is subject to change without notice. 4/08 610P727230E 856BR-01UF